

D500 Undercounter Dishwasher

Technical Specifications



CLASSEQ
Warewashing Made Simple.

D500

Front loading commercial dishwasher with three minute wash cycle and simple two button controls for effortless, consistently clean results.

The D500 is an easy to operate dishwasher with a 500 x 500mm basket that holds 18 full-sized plates. With its two, three and five minute wash cycle, this machine is capable of cleaning up to 750 plates per hour.

The digital LCD display accurately shows the temperature of the wash tank and rinse boiler, reassuring the operator that it is up to temperature and fully sanitising during the wash cycle.

With intuitive colour coded lighting and universally recognised symbols, this machine is incredibly easy to use, plus features performance enhancing customisations through its advanced settings modes. Additionally, its clever software constantly monitors wash cycles, temperatures, chemical usage and any errors giving valuable data which is used to improve operational efficiencies.

The D500 comes as standard with a gravity drain, which is suitable in instances where the machine is above the waste outlet. The optional drain pump (D500P) is essential where the drainage is either higher than the machines waste outlet, or has to be pumped to a stand pipe.



Optional Drain Pump
Our D500 is also available with an Optional Drain Pump. Model code: D500P.

Warewashing made simple:



Locally manufactured

Our machines are Made in Britain (Staffordshire) meaning shorter lead times on delivery, parts and support.



2, 3 and 5 Minute Cycle Time

The D500 2, 3 and 5 minute cycle allows for maximum output without compromising wash quality.



LCD Display

The D500 enhances user functionality by displaying rinse and wash tank temperatures.



Advanced Customer Features

Adjust rinse aid and detergent settings and priming of chemical pumps.



Simple Colour Coded Display

Amber flashing - Machine heating
Blue - Machine in cycle
Red - Error management activated
Green - Standby mode



Operational Monitoring

Our machine constantly monitors heating and water usage to improve the efficiency.

Machine Features:

| | | | |
|---------------------------------|--|------------------------------------|---|
| 1 500mm x 500mm basket | 2 Built-in chemical pumps | 3 Energy saving standby mode | 4 Removable basket guides |
| 5 Dual wash filter system | 6 Temperature interlock - guarantees hot rinse | 7 Assisted self-clean | 8 Noise reducing double skinned door |

Hydraulic specifications

| | |
|--|------------------|
| Water supply connection | G3/4" (3/4" BSP) |
| Minimum allowed supply water pressure | 2.0 bar |
| Required water flow rate | 11 L/min |
| Minimum incoming water temperature | 4°C |
| Maximum incoming water temperature | 55°C |
| Gravity drain height (from machine base) | 40 mm |
| (Optional) Pumped drain height (from machine base) | 600 mm |
| Drain size | Ø40 mm |

D500

Electrical specifications

Standard Set-up

| | |
|----------------------------|-----------------------|
| Amps Required | 30A (1 phase) |
| Standard Operating Voltage | 220-240V / 1N~ / 50Hz |
| Total Connected Load | 6.58kW |

Optional Set-up

| | |
|----------------------------|---------------------|
| Amps Required | 13A (3 phase) |
| Standard Operating Voltage | 380-415V / 3N-/50Hz |
| Total Connected Load | 6.58kW |

Optional Set-up

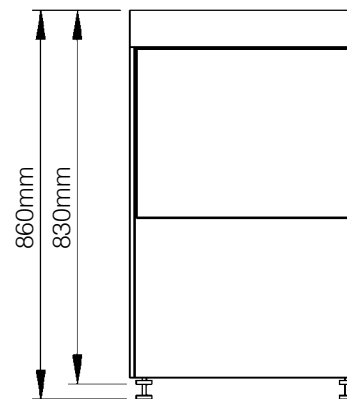
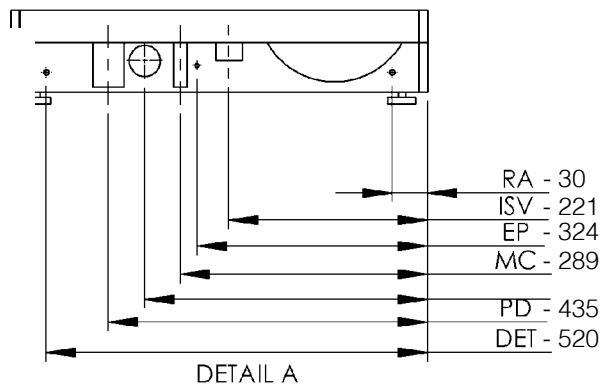
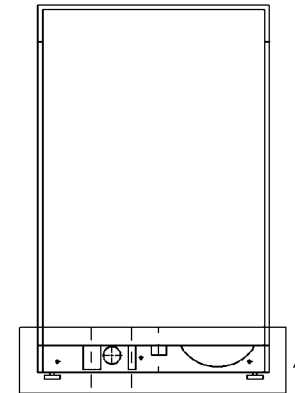
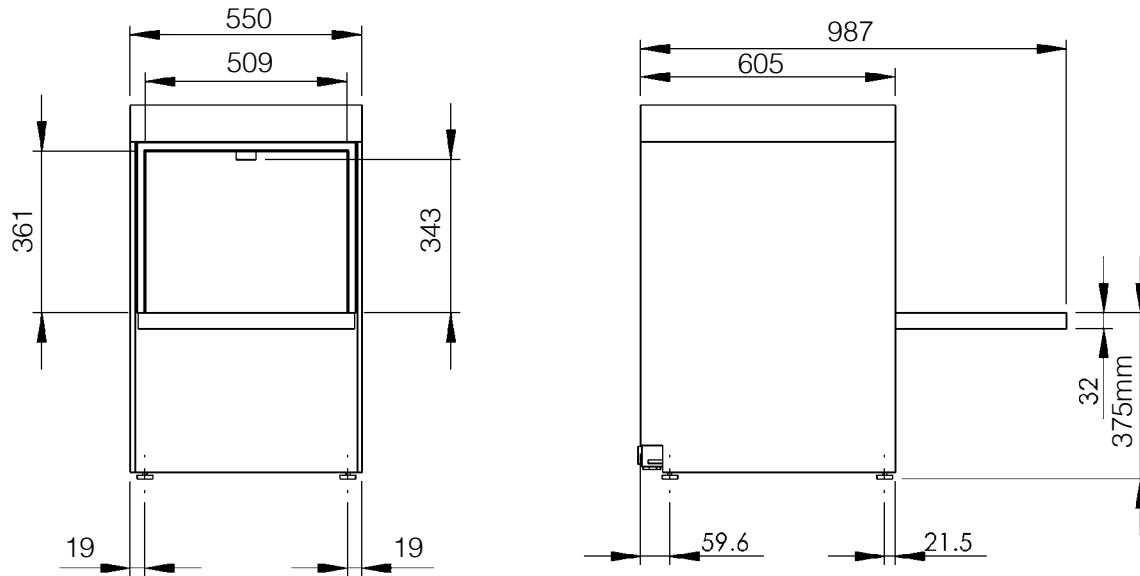
| | |
|----------------------------|-----------------------|
| Amps Required | 12A (1 phase) |
| Standard Operating Voltage | 220-240V / 1N~ / 50Hz |
| Total Connected Load | 2.58kW |

Performance

| | |
|----------------------------------|--------------|
| Wash tank element | 2.00kW |
| Rinse tank element | 6.00kW |
| Wash tank capacity | 14.5 litres |
| Rinse tank capacity | 7.5 litres |
| Rinse water consumption at 3 bar | 3.00 L/cycle |
| Theoretical maximum racks/hours | 30 |
| Wash tank temperature | 55°C |
| Rinse tank temperature | 82°C |
| Wash pump power | 0.58 kW |
| Rinse pump power | N/A |

Please Note: G500P Specification as above.

Mechanical Specifications



Additional Info:

| | |
|-------------------------------|------------|
| Wash water temperature | 55°C |
| Dish Washer rinse temperature | 82°C |
| Noise level | Under 70dB |
| Empty weight | 44kg |
| Fully Loaded weight | 64.5kg |
| Packed weight | 57.6kg |

Dimensions (mm):

550 (W) x 830 (H) (860 max) x 605 (D)

| Description | Symbol | Radius from machine (m) |
|----------------------------|--------|-------------------------|
| Rinse aid tube | RA | 3 |
| Inlet solenoid value | ISV | 1.8 |
| Mains electrical cable | EC | 1.3 |
| Pumped waste water outlet | PD | 1.5 |
| Equipotential bonding stud | EP | - |
| Detergent tube | DET | 3 |

Please Note: All dimensions in mm

Contact:

Tel: +44 (0)844 225 9250
Email: sales@classeq.co.uk

Classeq Ltd, Roebuck Way,
Knowlhill, Milton Keynes MK5 8WH

www.classeq.co.uk

CLASSEQ
Warewashing Made Simple.