

# INDUSTRIAL TUMBLE DRYER

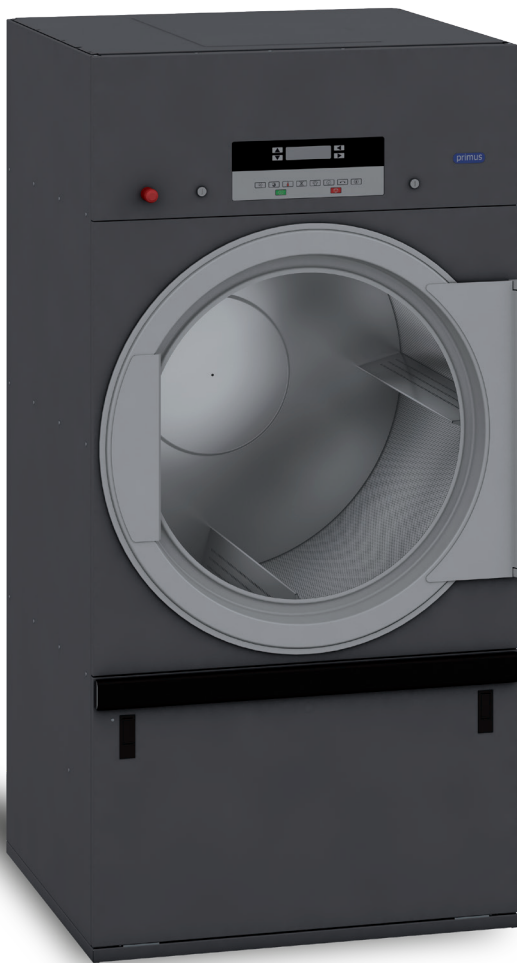
T  
RANGE

T 24

T 35

24KG  
53LB

35KG  
77LB

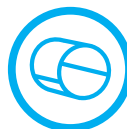


## FEATURES

- Standard stainless steel drum with large diameter
- Easy-to-use microprocessor: Easy Control
- Radial airflow with PowerDry®
  - maximal heat transfer
  - low energy consumption
  - short drying time
- Large door opening (Ø 81cm) for easy loading and unloading
- Self cleaning lint screen

## OPTIONS

- Connectivity with i-Trace Solution via WiFi Kit accessory
- Coin operated version
- Reversing drum
- Full Control programmer (FCT)
- Residual moisture control Sensodry®:
  - safe drying of delicate linen
  - humidity detection in %
  - ideal in combination with SoftWash®
  - ideal for dry cleaners, fire depts
  - available on Easy and Full Control
- Stainless steel front



STANDARD  
STAINLESS STEEL  
DRUM



LARGE DOOR  
OPENING

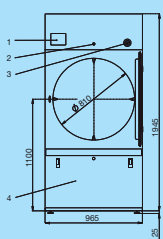


ENERGY  
EFFICIENT

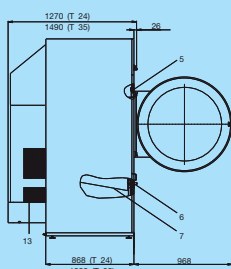
TYPE		T24	T35
<b>CAPACITY</b>			
Drum capacity 1:18	kg/lb	25/55	38/84
Drum capacity 1:22	kg/lb	24/56	31/68
Drum volume	l	530	680
Drum diameter	mm	Ø 930	Ø 930
<b>AIRFLOW</b>	m³/h	950	1200
<b>DRYING AVERAGE</b>	l/min.	0,384	0,560
<b>MOTORS</b>			
Fan	kW	0,55	0,55
Drive	kW	0,25	0,25
<b>GAS HEATING</b>			
Gas connection	NPT	3/4"	3/4"
Electrical connection		3x220-240V 50Hz, 1x220-240V 50Hz, 3x380-415V 50Hz	
Energy	kW	33/39	46/50
	kBTU/h	112,6/133,1	157,9/170,6
<b>STEAM HEATING</b>			
Steam connection	inch	3/4"	
Electrical connection		1x208V-240V 60Hz (3x380V-415V 50/60Hz)	
Steam output *	kW	27-36,2	39,3-52,7
Steam pressure	bar	7-10	7-10
<b>ELECTRICAL HEATING</b>			
Electrical connection		3x380V-415V 50/60Hz, 3x480V 60Hz	
Energy	kW	30/36	36/48
<b>PROGRAMMER</b>			
Easy control - antivandal (ECT)		Standard	Standard
Full control (FCT)		Available	Available
<b>EXHAUST</b>	mm	200	
<b>DIMENSIONS</b>			
Size HxWxD	mm	1975x965x1270	1975x965x1490
Net weight	kg	275	305
<b>TRANSPORT DATA</b>			
Packed HxWxD	mm	2075x1040x1320	2075x1040x1540
Gross weight	kg	300	330

+ = available, The data concerning dimensions of machines include all extended parts

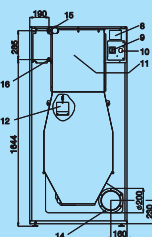
**FRONT T 24 35**



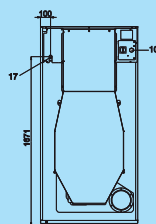
**SIDE T 24 35**



**BACK T 24 35  
(STEAM MODEL)**



**BACK T 24 35  
(GAS MODEL)**



1. Programmer
2. Lock of the control panel
3. Emergency stop button
4. Lint screen cover
5. Door lock microswitch
6. Lint cover microswitch
7. Lint screen
8. Name plate
9. Main switch
10. Main power supply
11. Heating chamber
12. Airflow switch
13. Suction
14. Exhaust piping
15. Steam supply
16. Condense drain
17. Gas connection

The Primus preserves the right to change the machines and the specification in this leaflet at any time, without prior notice. Details and photographs are only for information and never binding.

[www.primuslaundry.com](http://www.primuslaundry.com)



Primus by Alliance Laundry Systems